

(14 pt) Title of Your Paper, Capitalize First Letter (Times New Roman)

(12pt) First Author^{1*}, Second Author², Third Author²

(10pt)¹ Automotive Technology Center (ATeC), Politeknik Sultan Mizan Zainal Abidin, 23000 Dungun,
Terengganu

²Department of Mechanical Engineering, Politeknik Kota Kinabalu, 88450 Kota Kinabalu, Sabah
(10pt)***Corresponding author E-mail:** abc@psmza.edu.my

Abstract

Times New Roman, font size 10pt, 24 pt spacing after text, single line spacing, and maximum 250 words. Please include objective, methods, results and conclusions in the abstract.

Key Words: Include up to six key words for indexing and database word searches. Please separate key words by semicolons

1. INTRODUCTION

Papers may be submitted in English OR Bahasa Malaysia. Minimum pages required are 6 pages and cannot exceed 10 pages (including references). This document is a template of Microsoft Word version 2013 document. Please save your paper as a Microsoft Words format. The paragraphs continue from here and are only separated by headings, subheading, images, formulas and equations and 6pt spacing after.

2. PAGE SETUP

The top margin (2.54 cm), bottom (2.54 cm), left (2.54 cm); and right (2.54 cm). Papers should be printed on A4 size paper (21 x 29.7 cm).

3. STRUCTURE

File should be prepared in Microsoft Word format only and should be ready for printing. Figures, tables and equations must be embedded in text. Make sure that author use Times New Roman in the whole document write-up. Full – length article should follow this order: Title, Authors name and affiliation, Corresponding authors email, Abstract, Key words, Introduction, Materials and Methods, Results and discussions, Conclusion, Acknowledgement, References, and Appendix (optional).

4. TABLES

All tables should be numbered with Arabic numerals. Headings should be placed above tables (in bold letters), left justified, 6 pt spacing before and after, and single line spacing. Only horizontal lines should be used within a table, to distinguish the column heading from the body of the table, and immediately above and below the table. Tables must be embedded into the text and not supplied separately.

(12pt) Table 1: An example of a table

Variable	Sample A	Sample B	OR (95% CI)	χ^2, p -value
(10 pt)	(10 pt)	(10 pt)	(10 pt)	(10 pt)
(10 pt)	(10 pt)	(10 pt)	(10 pt)	(10 pt)
(10 pt)	(10 pt)	(10 pt)	(10 pt)	(10 pt)

5. FIGURES

All figures should be numbered with Arabic numerals. All photographs, graphs and diagrams are to be referred to as figures. Line drawings should be good quality, low-quality scans are not acceptable. Figures must be embedded into the text and not supplied separately. Figures should be placed at the top or bottom of a page wherever possible, as close as possible to the first reference to them in the paper.

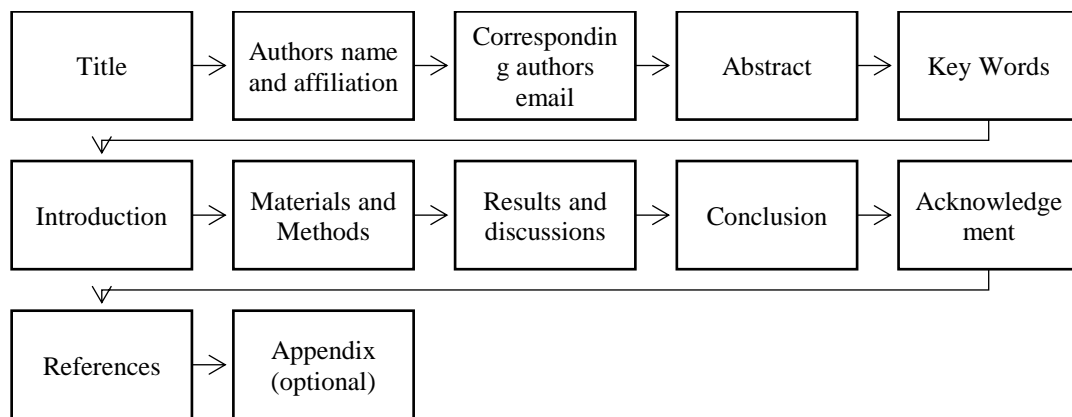


Figure 1: Structure of the article

6. SECTION HEADINGS

Section heading should be left justified, capitalized, bold, 12 pt, 6 pt spacing before and after, and numbered consecutively, starting with the Introduction. Sub-section headings should be in capital for first letter and numbered 1.1, 1.2, etc., and left justified like an example above.

6.1 Sub-Section Headings

7. EQUATIONS

The equations and formula should be typed and numbered consecutively with Arabic numerals in parentheses on the right-hand side of the page and should be placed inside of hidden table. The use of Microsoft word tools (Equation and Symbols are highly recommended for writing equations).

$$P_i = \frac{EXP[\beta_0 + \beta_1 X_{1,i} + \beta_2 X_{2,i} + \dots + \beta_K X_{K,i}]}{1 + EXP[\beta_0 + \beta_1 X_{1,i} + \beta_2 X_{2,i} + \dots + \beta_K X_{K,i}]} \quad (1)$$

8. REFERENCES

References should be listed at the end of the paper. Authors should ensure that every reference in the text appears in the list of references and vice versa. References for journal, books, electronic book, chapter in book, chapter in electronic book, proceedings and online document is according to **American Psychological Association (APA)** style. Please refer www.apastyle.org for further details about organizing the references.

Example:

- JKJR. (2014). *Malaysia Road Safety Plan 2014 - 2020*. Kuala Lumpur: Road Safety Department of Malaysia Retrieved from http://www.jkjr.gov.my/ms/bilik_media/penerbitan/penerbitan/Pelan-Keselamatan-Jalan-Raya-Malaysia-2014-2020/.
- Milton, J. C., Shankar, V. N., & Mannering, F. L. (2008). Highway accident severities and the mixed logit model: an exploratory empirical analysis. *Accident Analysis & Prevention*, 40(1), 260-266.
- Washington, S. P., Karlaftis, M. G., & Mannering, F. L. (2010). *Statistical and econometric methods for transportation data analysis*: CRC press.
- WHO. (2011). Global plan for the Decade of Action for Road Safety 2011–2020. *Geneva: WHO*.
- Yu, R., Xiong, Y., & Abdel-Aty, M. (2014). A Correlated Random Parameter Approach to Investigate the Effects of Weather Conditions on Crash Risk for a Mountainous Freeway. *Transport Res. Part C*. doi:<http://dx.doi.org/10.1016/j.trc.2014.09.016>